



Validate

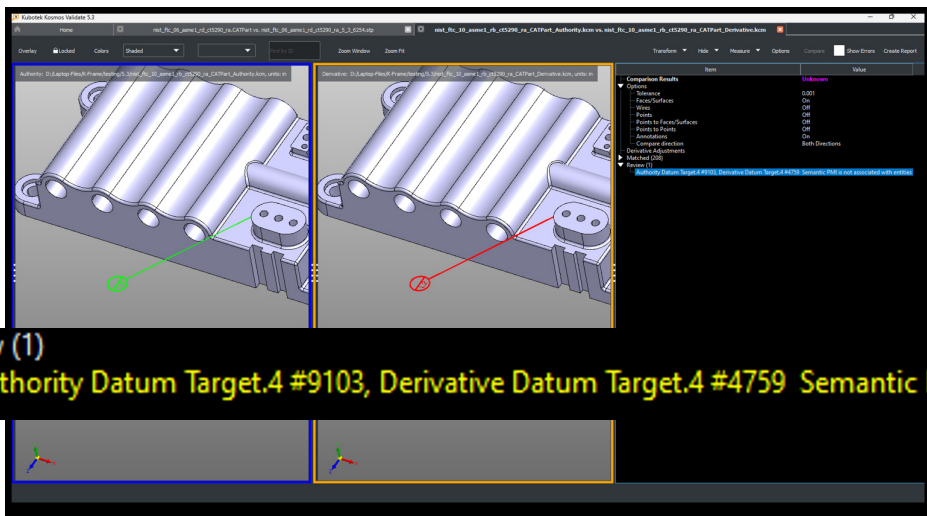
CAD FILE DISCREPANCY REPORT SOFTWARE

What's New in Validate 6.0

| | |
|-----------------------------------|---|
| Semantic PMI Enhancement | 2 |
| High-Resolution Monitor Support | 2 |
| Point To Face Compare Enhancement | 3 |
| Updated Reader Formats | 4 |

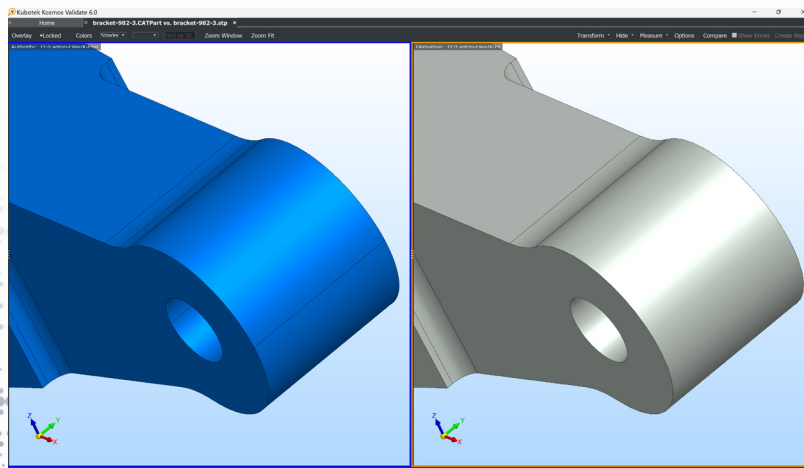
Semantic PMI Enhancement

Compare results now include improved support for PMI objects to assure full semantic associativity of these critical tolerance-type annotations to faces of the part model. Comparison between translated files now alerts users to inconsistencies in model connectivity of these PMI objects, even when they are graphically correct.



High-Resolution Monitor Support

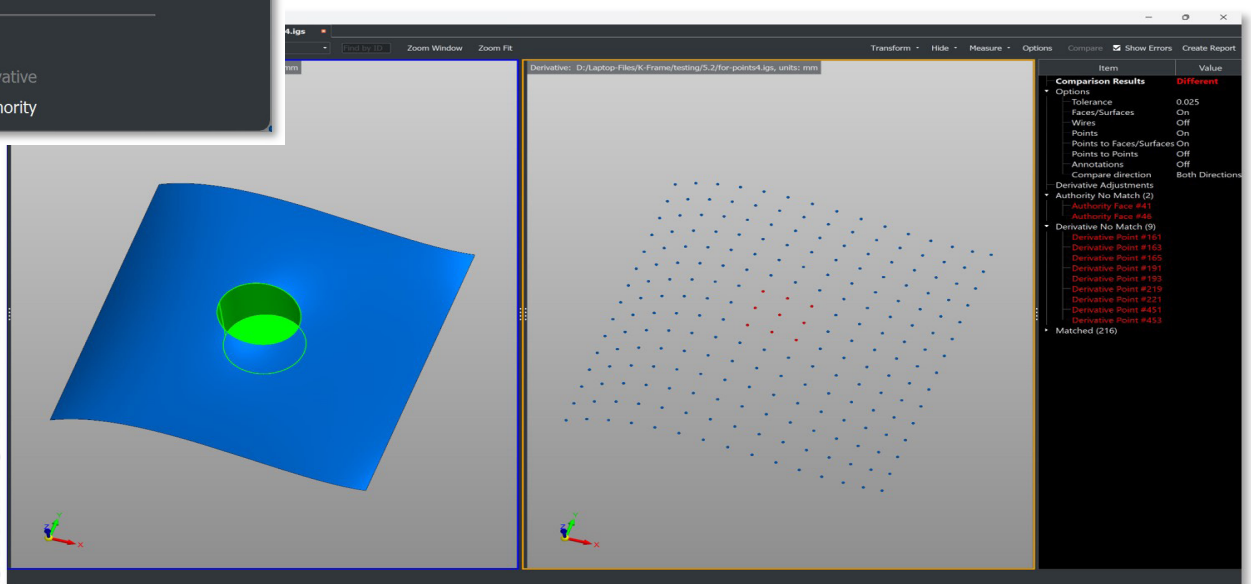
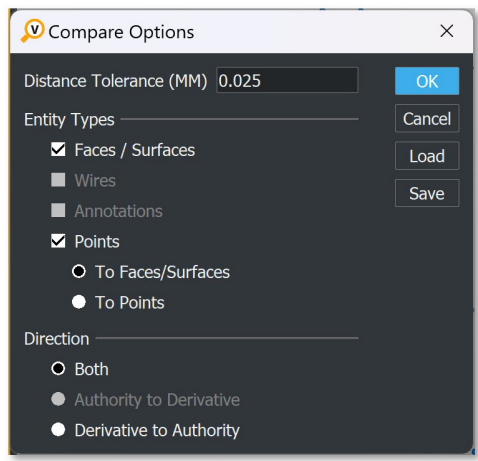
Validate's interface has been enhanced to handle high-resolution monitors (4K+), giving users cleaner, crisper screen graphics.



Point to Face Compare Enhancement

Both directions can now be compared using Point to Face Compare. This will show not only points that are not on the Faces/Surfaces of the authority file but if any Faces/Surfaces do not have points on them from the Derivative file, the Faces/ Surfaces will be listed in the Authority No Match area of the results tree.

This feature strengthens support for MBD data being used in manufacturing or inspection software which does not have the ability to export B-Rep models. This option is important for verification that the inspection software has accounted for all geometry from the authority model.



Updated Reader Formats

New Read Format:

- CNC Software Mastercam MCX and MCAM formats

Updated Read Formats:

- Autodesk Inventor 2024
- Dassault Systemes (DS) CATIA V6 / 3DEXPERIENCE R2024x
- DS Spatial ACIS 2024
- DS SolidWorks 2024
- Kubotek Kosmos KeyCreator 2024
- PTC Creo 10.0
- Siemens Digital Industries Software (SDIS) NX 2306
- SDIS Parasolid V36
- SDIS Solid Edge 2024



Kubotek Kosmos

2 Mount Royal Ave. Suite 500, Marlborough, MA 01752

Phone: 800-372-3872

www.KubotekKosmos.com

interest@KubotekKosmos.com