



Revision

ENGINEERING CHANGE REPORT SOFTWARE

What's New in Revision 6.0

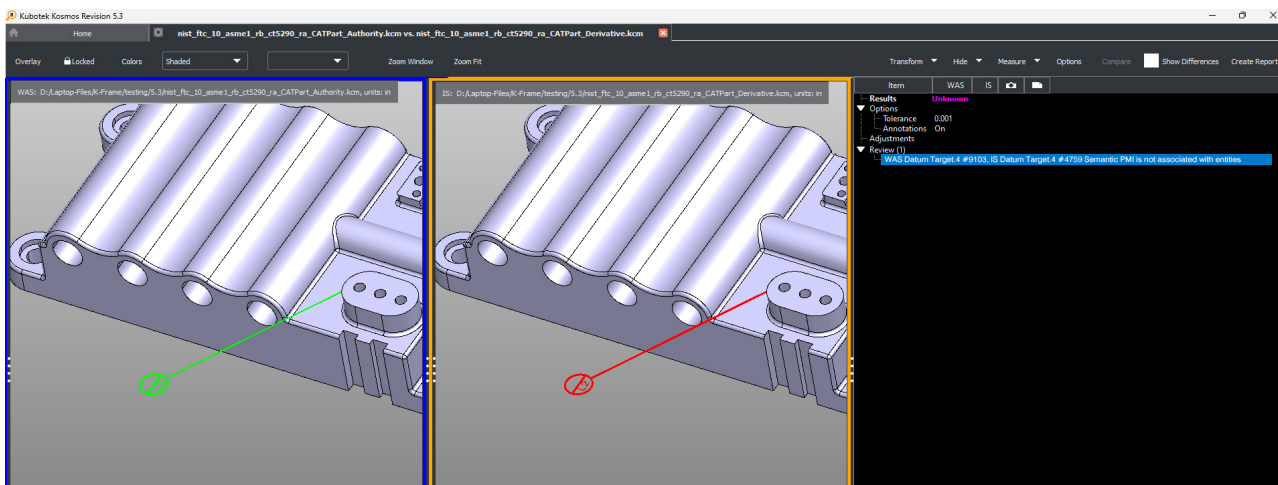
Speed Increase	2
Enhanced PMI Compare	2
High-Resolution Monitor Support	3
Updated Reader Formats	4

Speed Increase

Performance of file opening has been further optimized. Testing with a suite of customer files confirmed load times are 40% faster on average than version 5.

Enhanced PMI Compare

Compare results now include improved support for PMI objects to assure full semantic associativity of these critical tolerance-type annotations to faces of the part model. Comparison between translated files now alerts users to inconsistencies in model connectivity of these PMI objects, even when they are graphically correct.

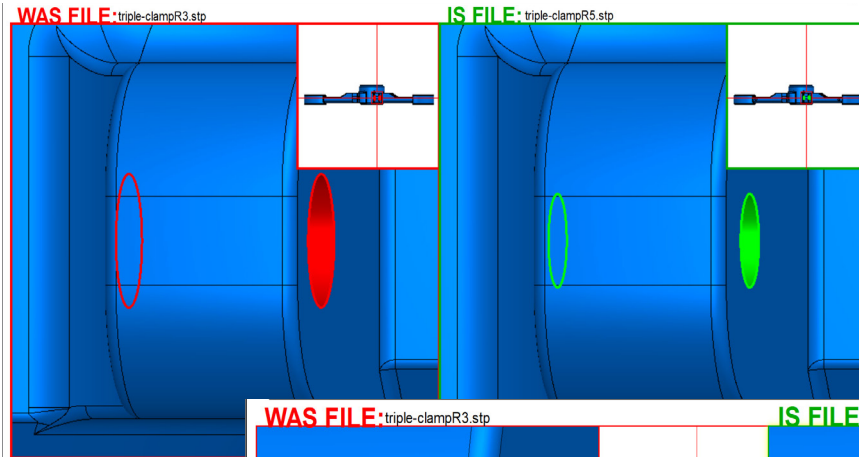


Review (1)

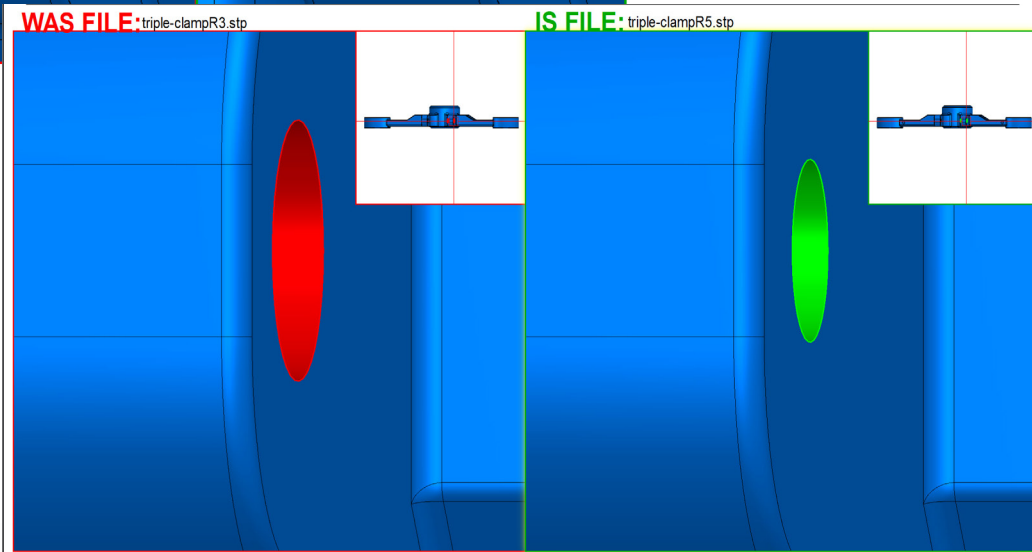
WAS Datum Target.4 #9103, IS Datum Target.4 #4759 Semantic PMI is not associated with entities

High-Resolution Monitor Support

Revision's interface has been enhanced to handle high-resolution monitors (4K+), giving users cleaner, crisper screen graphics.



Revision 5.3



Revision 6.0

Updated Reader Formats

New Read Format:

- CNC Software Mastercam MCX and MCAM formats

Updated Read Formats:

- Autodesk Inventor 2024
- Dassault Systemes (DS) CATIA V6 / 3DEXPERIENCE R2024x
- DS Spatial ACIS 2024
- DS SolidWorks 2024
- Kubotek Kosmos KeyCreator 2024
- PTC Creo 10.0
- Siemens Digital Industries Software (SDIS) NX 2306
- SDIS Parasolid V36
- SDIS Solid Edge 2024



Kubotek Kosmos

2 Mount Royal Ave. Suite 500, Marlborough, MA 01752

Phone: 800-372-3872

www.KubotekKosmos.com

interest@KubotekKosmos.com