

KUBOTEK®



CAD File Discrepancy Report Software

What's New in 4.0

	PAGE
Benefits	3
3Dconnexion 3D Motion Controller Support	3
STL Derivative Compare	4
CKD Wire Read and Compare	4
Improved Assembly Compare	5-7
Enhanced Annotation List	8
Enhanced Annotation Hide	8
Enhanced STEP AP242	9
Angle By 4 Points	9
New Read Format	10
Updated Read Formats	10

Benefits

K-Compare Validate 4.0 has significant improvements for productivity, interoperability, & user interface (UI) over the previous major release.

3Dconnexion 3D Motion Controller Support

New ability to use the 3Dconnexion devices in K-Compare Validate

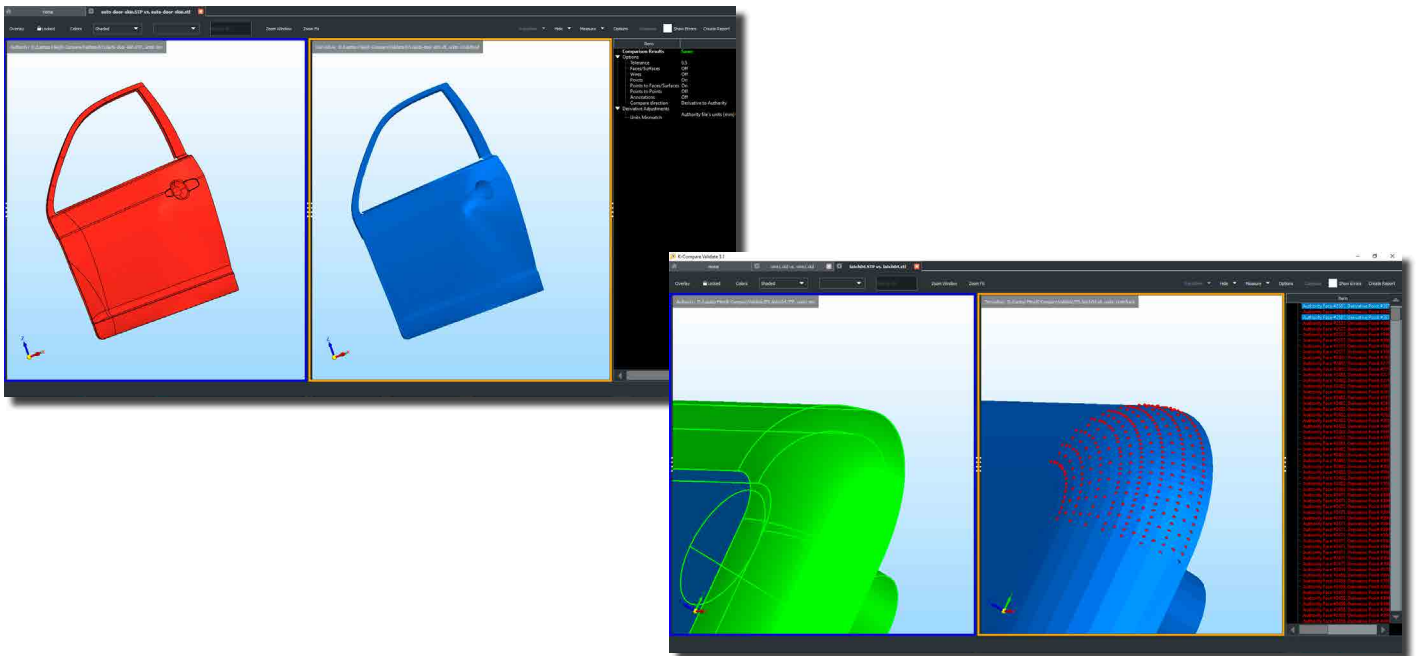
- Allows entities in files to be rotated, panned, and zoomed using the 3D mouse
- Makes navigating through CAD data sets as familiar and efficient as possible for users of each of those CAD programs



STL Derivative Compare

New ability to compare STL derivatives to authority CAD data

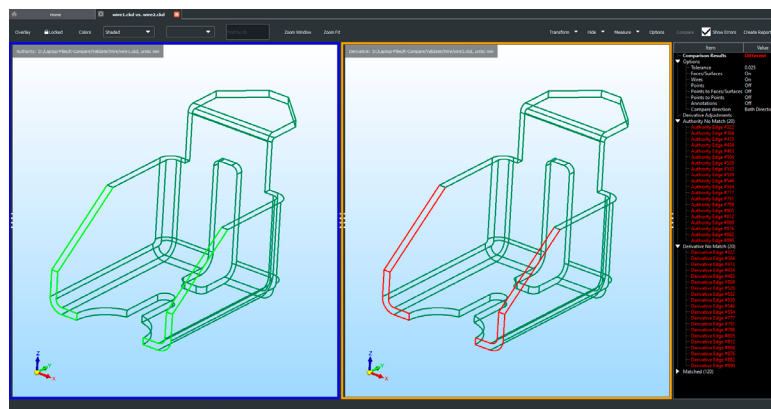
Stereolithography (STL) mesh is commonly used in 3D printing and additive manufacturing. With the Premium level of the 4.0 release, STL files can now be compared back to the CAD file which they approximate. K-Compare Validate will alert users if the STL file deviates from the original within a user defined precision and record that this check was completed for quality compliance requirements.



CKD Wire Read and Compare

New ability to read and compare CKD (KeyCreator) files

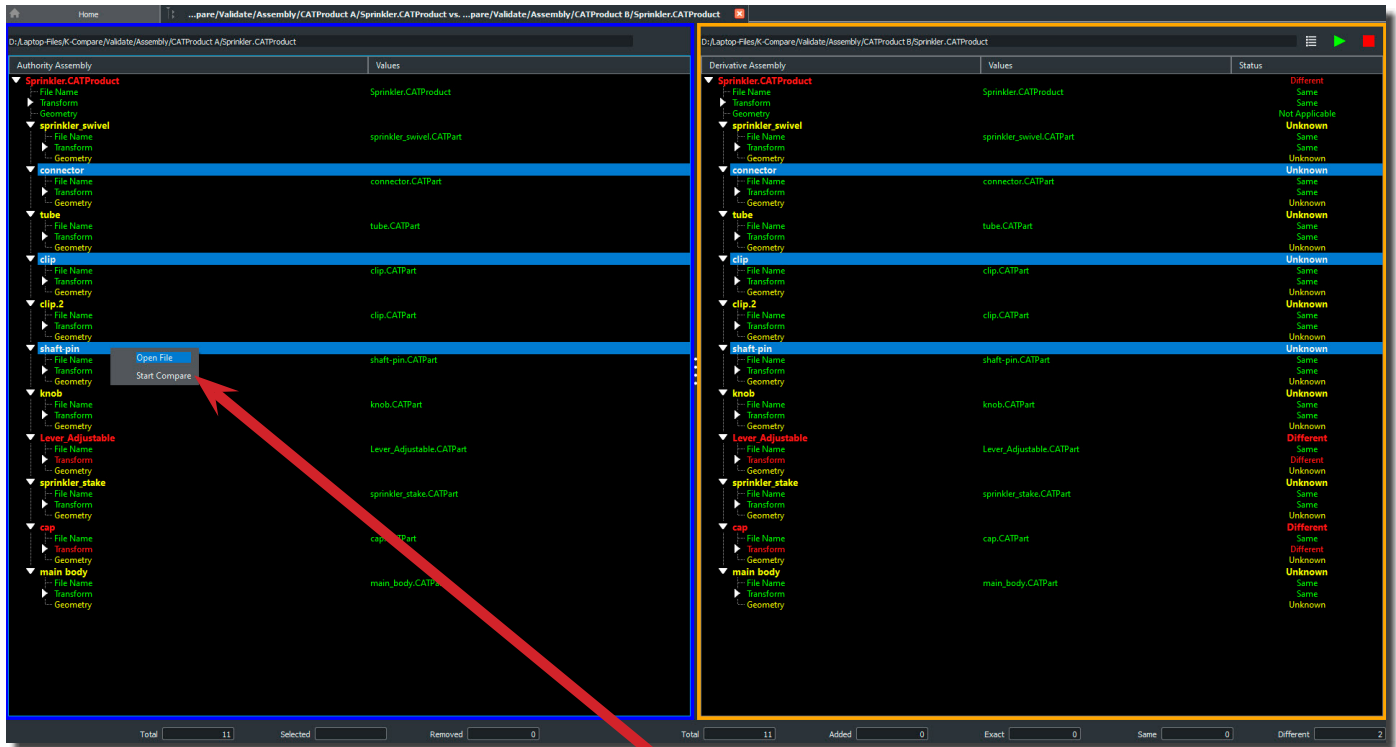
- Allows users to compare complex 3D wireframe files quickly and accurately



Improved Assembly Compare

Assembly Compare allows you to select individual part reference files to open

- Allows users to select one or multiple files in the assembly
- Quickly view part references without opening the entire assembly file
- Easy to use Right Mouse Button functionality



Open File
Start Compare

Improved Assembly Compare *Cont.*

Assembly Compare allows you to select individual part reference files to compare

- Allows users to select one or multiple files in the assembly
- Save time comparing part references without comparing the entire assembly file
- Easy to use Right Mouse Button functionality



Open File

Start Compare

Improved Assembly Compare *Cont.*

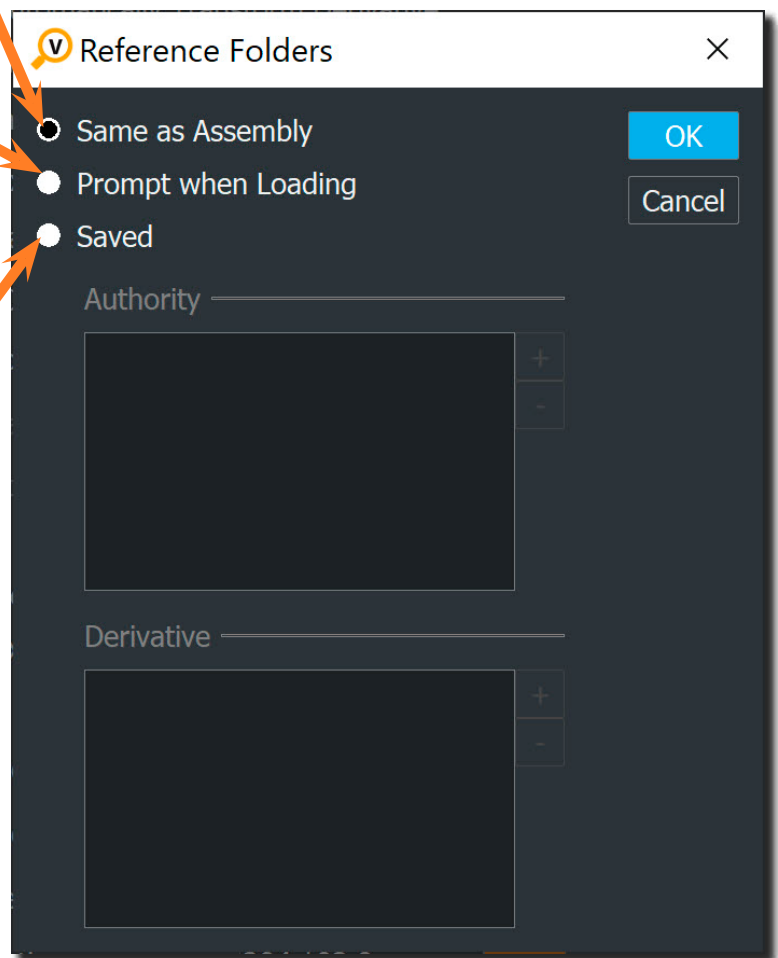
Assembly Compare allows you to select part reference folder locations

- Allows users to select different folders for Part Reference files that are not in the same folder(s) as the Assembly files
- Users can select prompt when loading is select multiple folder locations for part references
- Makes comparing assembly files much easier for the user without having to have all the files in one folder

Part References are in the same folder as assembly files

K-Compare will ask for a Part Reference location if the Part References are not in the same folder as the assembly files

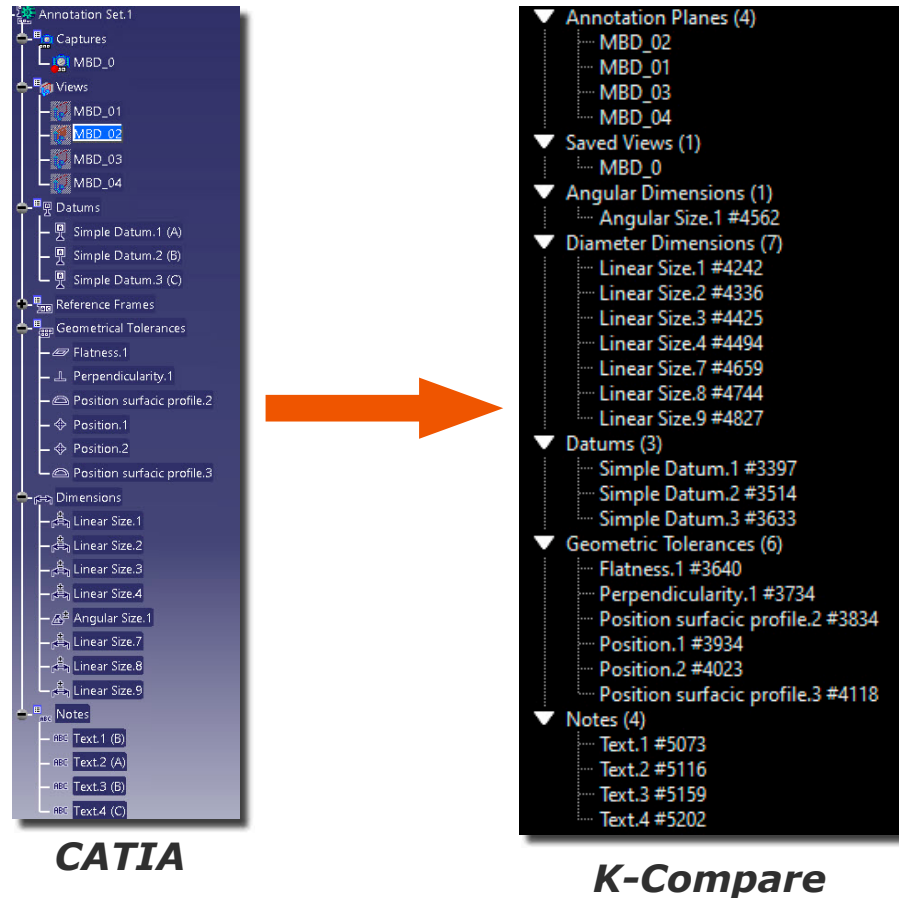
Add multiple Part Reference folder locations for Authority and Derivative



Enhanced Annotation List

Model Tree Annotation List enhanced for a better breakdown of model MBD information

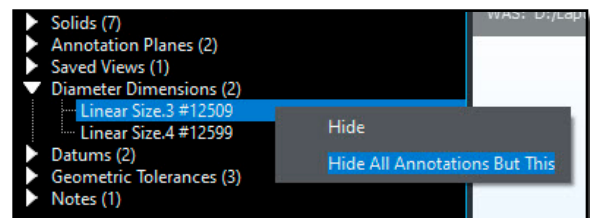
The user interface has been improved to sort different types of annotation and view entities into separate folders in the file contents list. Saved and captured views in the new list format better match the structure used in the originating CAD software. This is an important first step for users to review the contents of the CAD file and adjust the display for better visualization.



Enhanced Annotation Hide Options

Hide enhancement added for each annotation

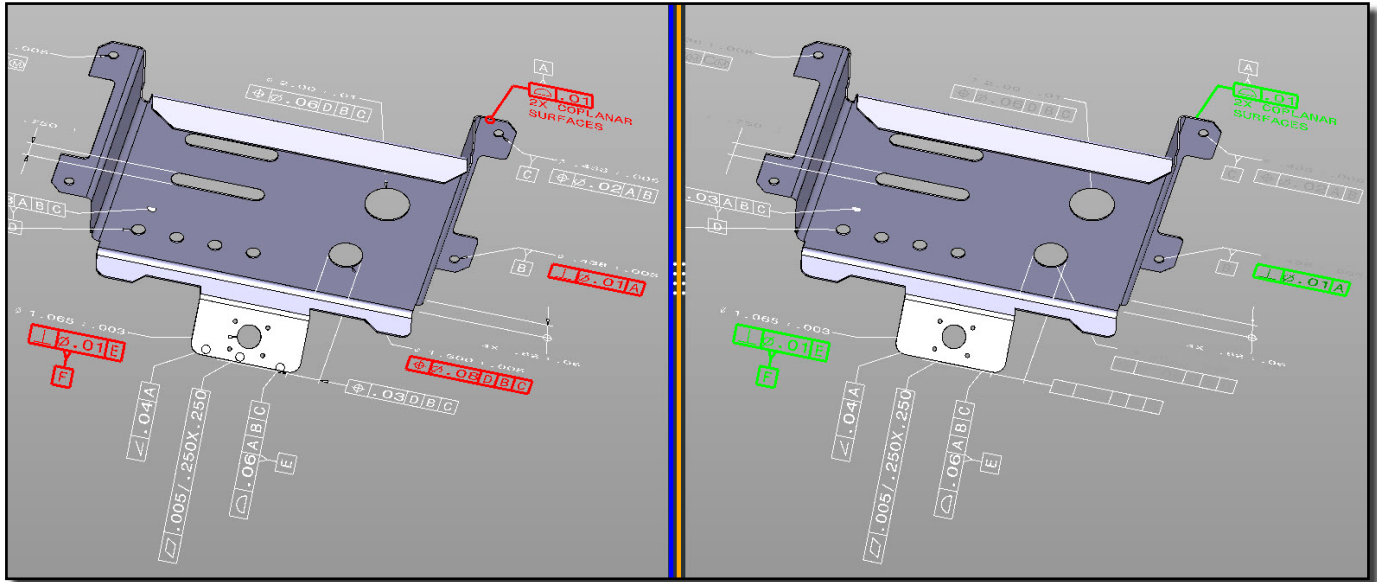
- Any MBD/PMI annotation can be individually hidden
- Eliminate MBD clutter by viewing only what you want to view
- Easy to use via Right Mouse Button



Enhanced STEP AP242

Enhancement to support STEP AP242 semantic MBD/PMI definitions

- The algorithm uses paired faces for semantic annotation compare
- Semantic compare will show only different attributes in the Results Tree

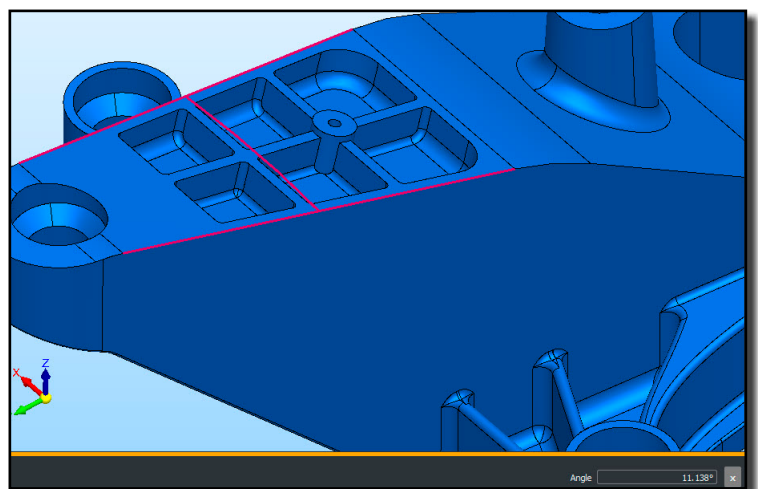
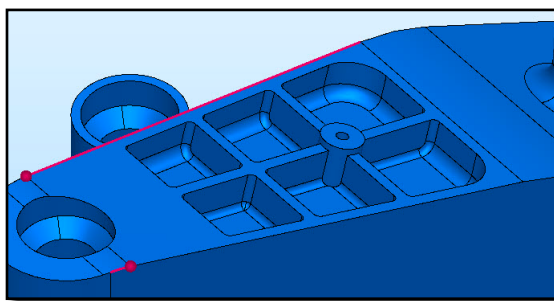


Model courtesy of NIST

Angle By 4 Points

New function to measure an angle by 4 points

- Easily get an angle by selecting 4 points on the model
- Get precise measurement of angles between part geometry even when there are no linear edge entities to select



New Read Formats

K-Compare Validate continues improvements on its extensive format read capabilities with several format updates.

Siemens Solid Edge (Sheet metal file format)

Updated Read Formats

- **Autodesk Inventor 2022**
- **Dassault Systemes (DS) CATIA V5 R2021x (R31)**
- **DS V6/3DExperience R2021x**
- **DS SolidWorks 2022**
- **DS Spatial ACIS 2022**
- **PTC Creo 8.0**
- **Siemens Digital Industries Software (SDIS) NX 2000 (1980 Series)**
- **SDIS Solid Edge 2022**
- **SDIS Parasolid V34**
- **SDIS/ISO JT 10.7**



Kubotek3D

2 Mount Royal Ave. Suite 500, Marlborough, MA 01752

Phone: 800-372-3872

www.kubotek3d.com

sales@kubotek3d.com