

KUBOTEK®



CAD File Discrepancy Report Software

What's New in 4.0

Table of Contents

Benefits

3Dconnexion 3D Motion Controller Support

Improved Assembly Compare

Enhanced Annotation List

Enhanced Annotation Hide

Enhanced STEP AP242

Angle By 4 Points

Report Variables Enhancement

New Read Format

Updated Read Formats

PAGE

3

3

4-6

7

7

8

8

9

9

10

Benefits

K-Compare Revision 4.0 has significant improvements for productivity, interoperability, & user interface (UI) over the previous major release.

3Dconnexion 3D Motion Controller Support

New ability to use the 3Dconnexion devices in K-Compare Revision

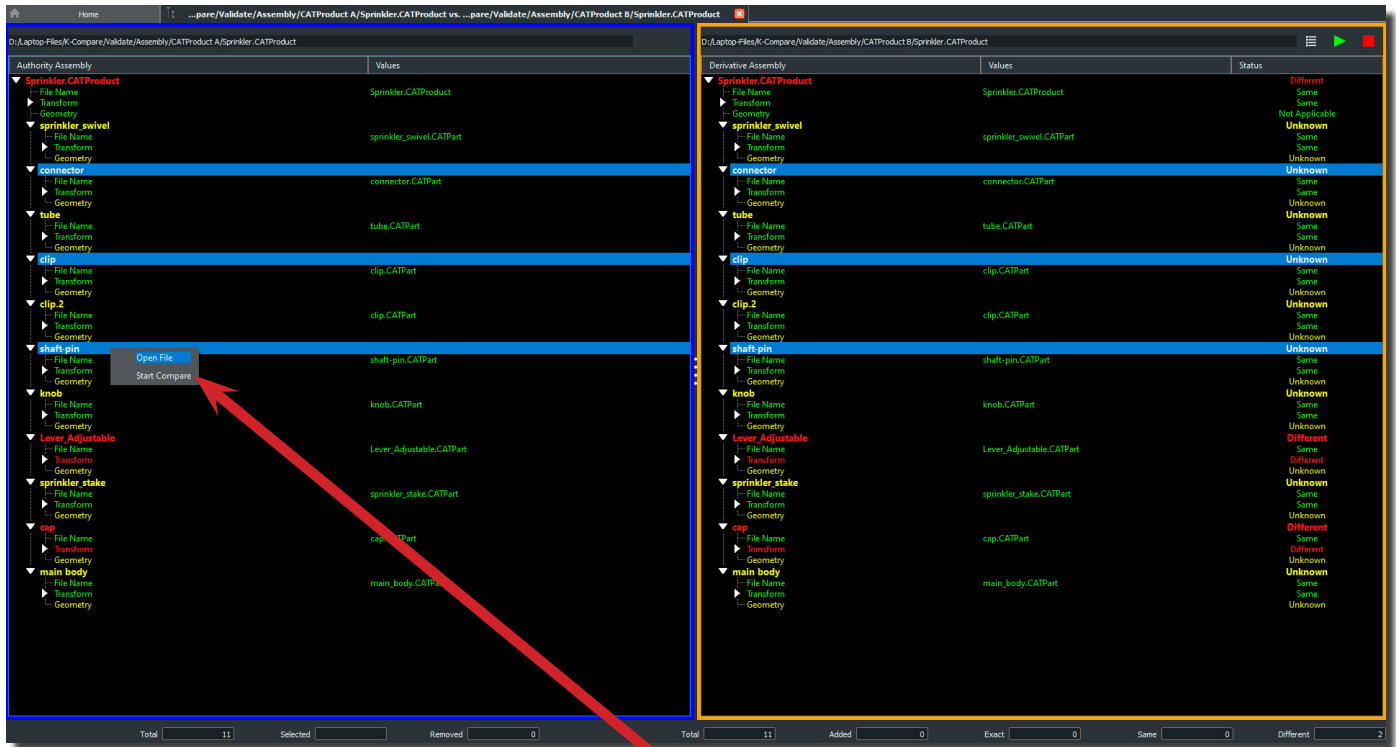
- Allows entities in files to be rotated, panned, and zoomed using the 3D mouse
- Makes navigating through CAD data sets as familiar and efficient as possible for users of each of those CAD programs.



Improved Assembly Compare

Assembly Compare allows you to select individual part reference files to open

- Allows users to select one or multiple files in the assembly
- Quickly view part references without opening the entire assembly file
- Easy to use Right Mouse Button functionality



Open File
Start Compare

Improved Assembly Compare *Cont.*

Assembly Compare allows you to select individual part reference files to compare

- Allows users to select one or multiple files in the assembly
- Save time comparing part references without comparing the entire assembly file
- Easy to use Right Mouse Button functionality



Open File

Start Compare

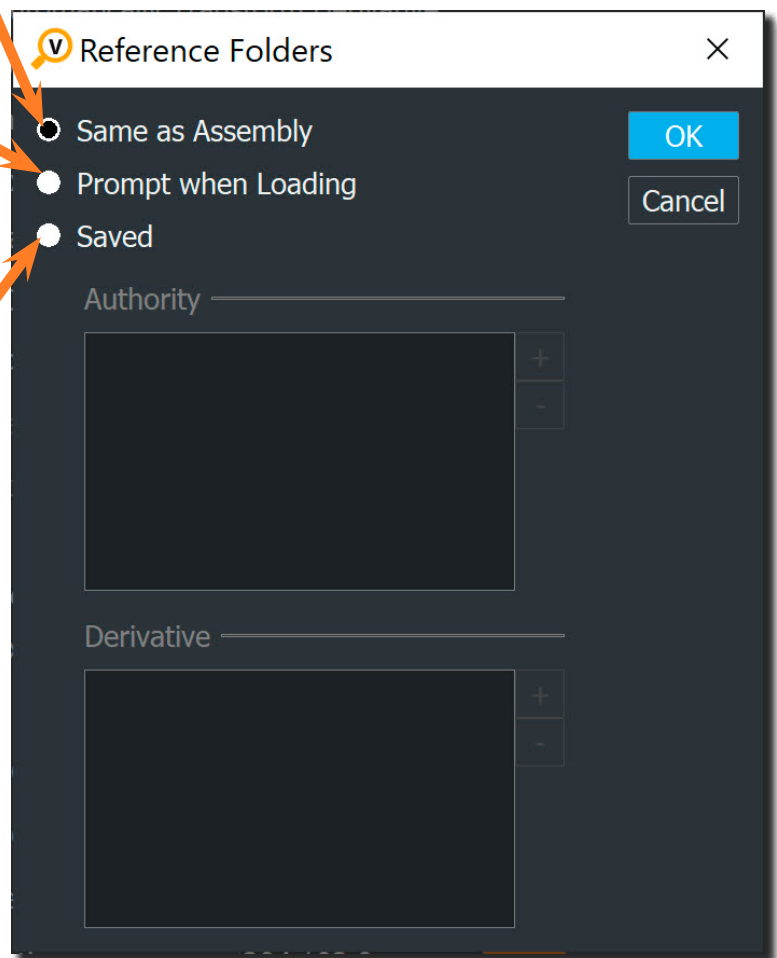
Assembly Compare allows you to select part reference folder locations

- Allows users to select different folders for Part Reference files that are not in the same folder(s) as the Assembly files
- Users can select prompt when loading is select multiple folder locations for part references
- Makes comparing assembly files much easier for the user without having to have all the files in one folder

Part References are in the same folder as assembly files

K-Compare will ask for a Part Reference location if the Part References are not in the same folder as the assembly files

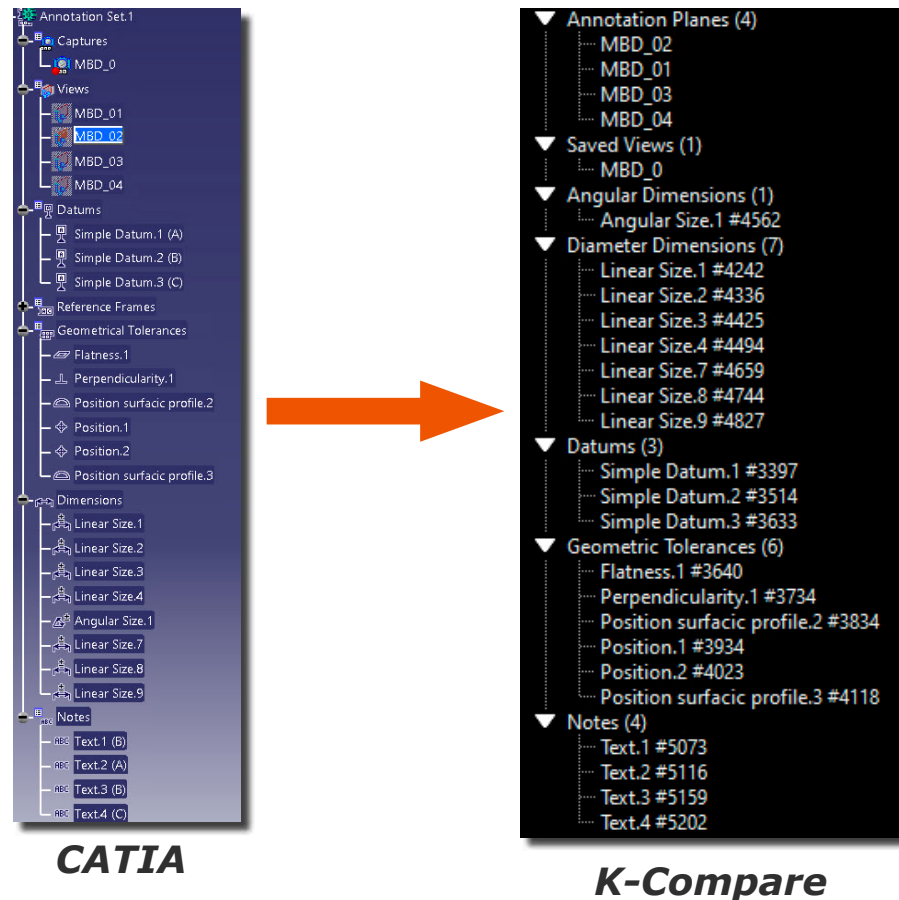
Add multiple Part Reference folder locations for Authority and Derivative



Enhanced Annotation List

Model Tree Annotation List enhanced for a better breakdown of model MBD information

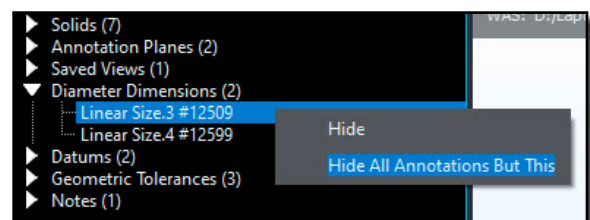
The user interface has been improved to sort different types of annotation and view entities into separate folders in the file contents list. Saved and captured views in the new list format better match the structure used in the originating CAD software. This is an important first step for users to review the contents of the CAD file and adjust the display for better visualization



Enhanced Annotation Hide Options

Hide enhancement added for each annotation

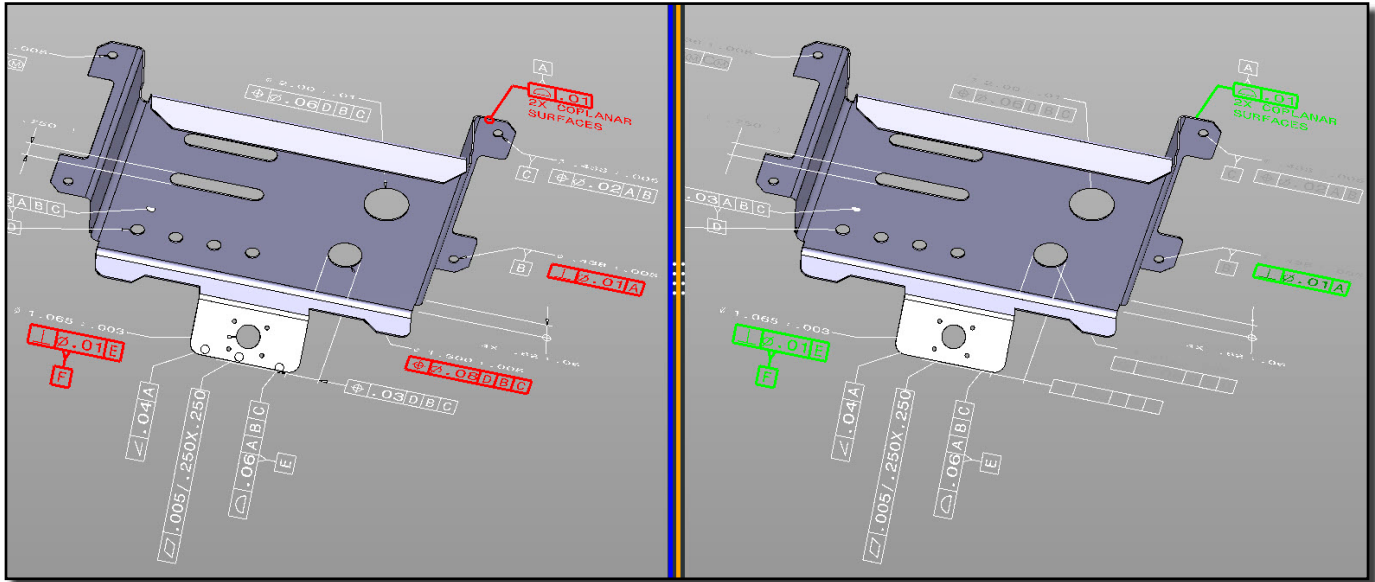
- Any MBD/PMI annotation can be individually hidden
- Eliminate MBD clutter by viewing only what you want to view
- Easy to use via Right Mouse Button



Enhanced STEP AP242

Enhancement to support STEP AP242 semantic MBD/PMI definitions

- The algorithm uses paired faces for semantic annotation compare
- Semantic compare will show only different attributes in the Results Tree

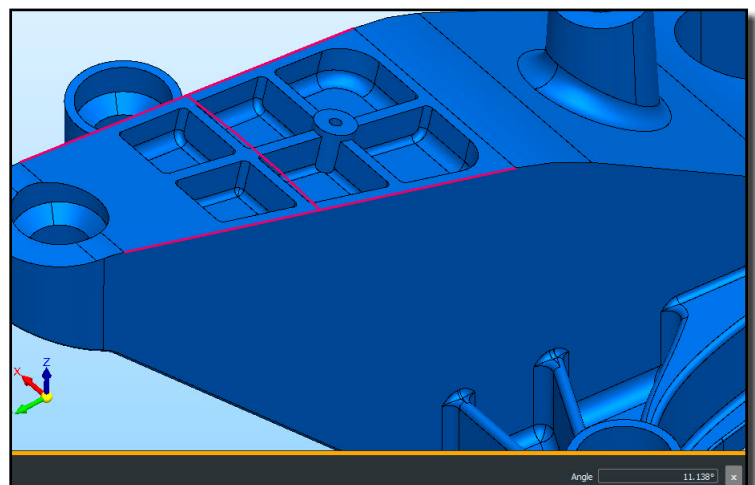
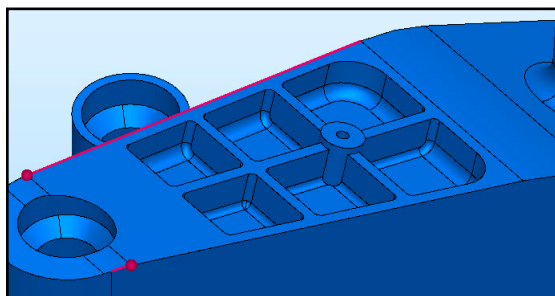


Model courtesy of NIST

Angle By 4 Points

New function to measure an angle by 4 points

- Easily get an angle by selecting 4 points on the model
- Get precise measurement of angles between part geometry even when there are no linear edge entities to select



Report Variables Enhancement

New Variables have been added to be used in a report

- Easy drag and drop on to report
- Variables can be used in the template creation process or the reporting process
- There are 3 new Variables you can use on your reports
 - Part Number
 - Change Number
 - Revision

Results	Variables	
Description	Symbol	Value
Part Number	\$PN	
Change Number	\$CN	
Revision	\$REV	
Number of Pages	\$NPGS	2
▶ Current Date	\$DATE1	Wed May 19 202
▶ Current Time	\$TIME1	1:44 PM

New Read Formats

K-Compare Revision continues improvements on its extensive format read capabilities with several format updates.

Siemens Solid Edge (Sheet metal file format)

Updated Read Formats

- **Autodesk Inventor 2022**
- **Dassault Systemes (DS) CATIA V5 R2021x (R31)**
- **DS V6/3DEXperience R2021x**
- **DS SolidWorks 2022**
- **DS Spatial ACIS 2022**
- **PTC Creo 8.0**
- **Siemens Digital Industries Software (SDIS) NX 2000 (1980 Series)**
- **SDIS Solid Edge 2022**
- **SDIS Parasolid V34**
- **SDIS/ISO JT 10.7**



Kubotek3D

2 Mount Royal Ave. Suite 500, Marlborough, MA 01752
Phone: 800-372-3872 www.kubotek3d.com sales@kubotek3d.com